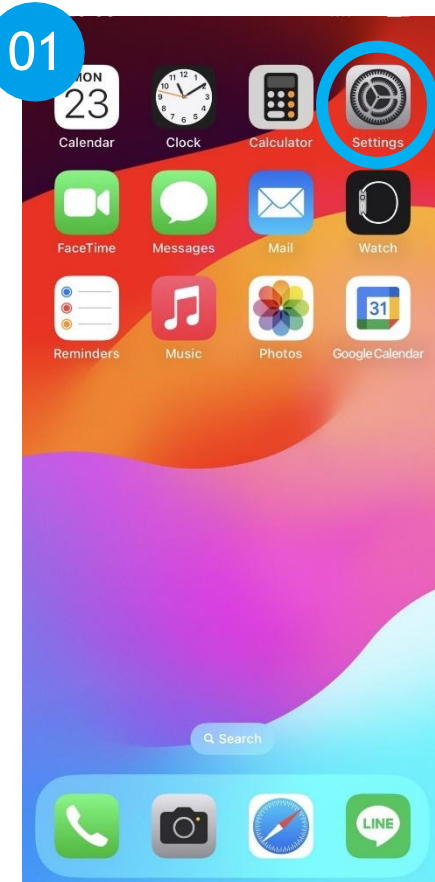


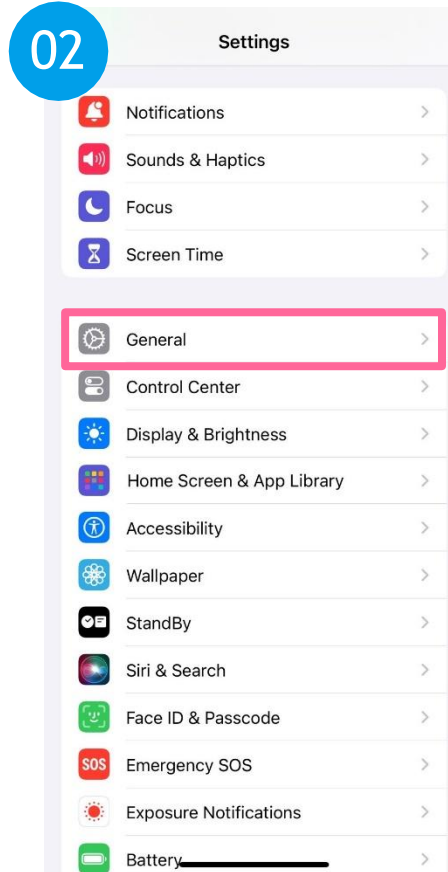
01

How to check if your device supports eSIM

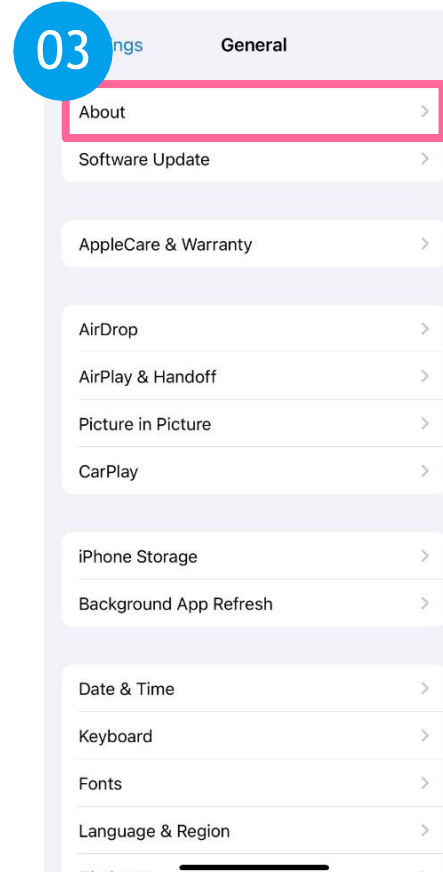
iOS



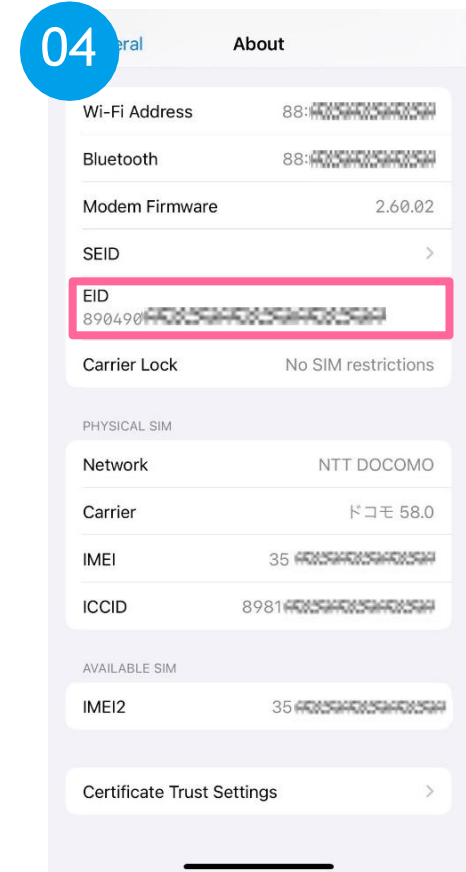
Tap "Settings"



Select "General"



Select "About"



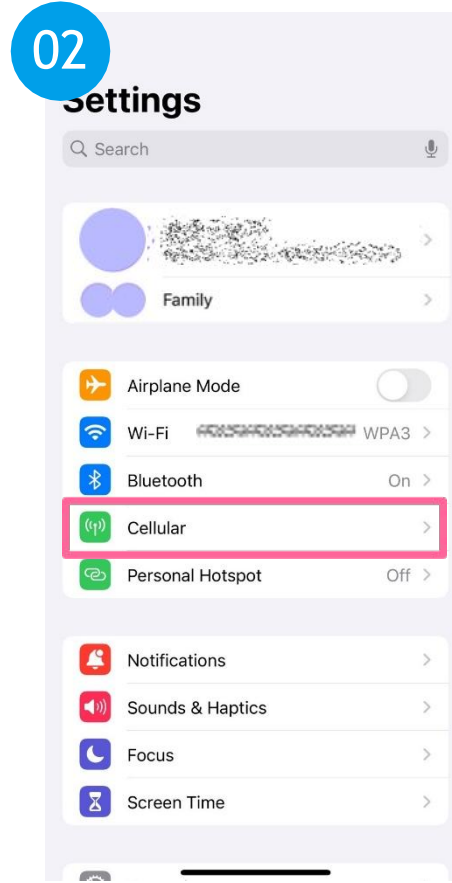
If the "EID" field exists and contains a 32-digit number, your device supports eSIM

※Please note that the display may differ depending on the iOS version.

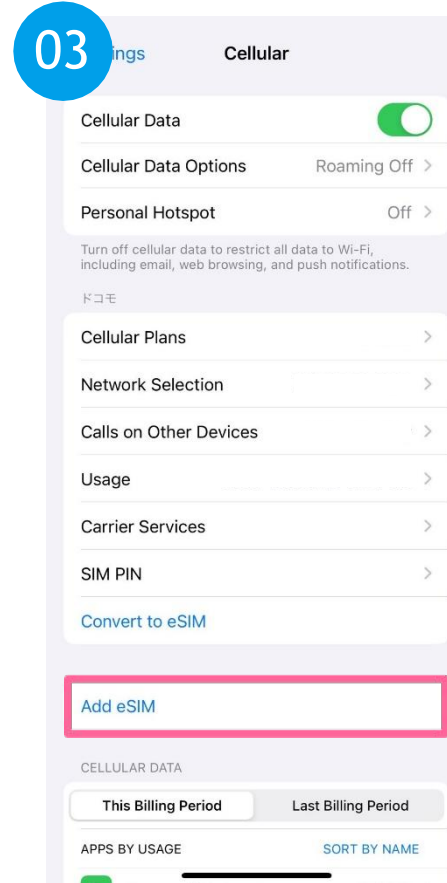
Minpaku
eSIM



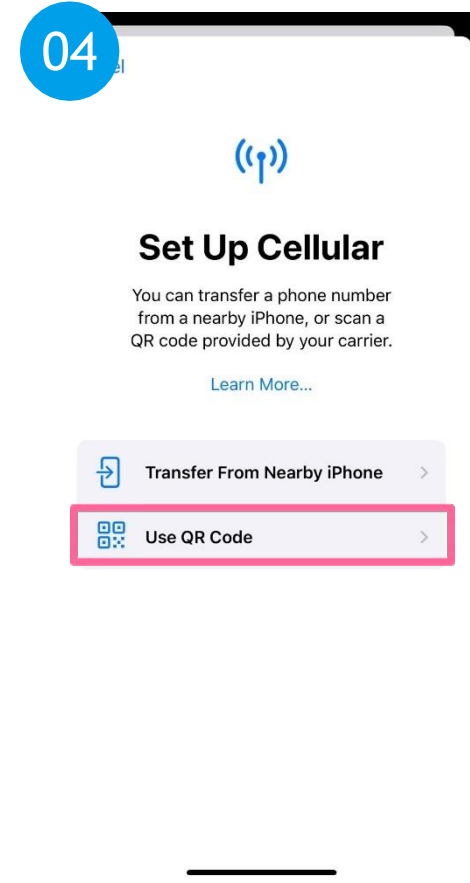
Tap "Settings"



Select "Cellular"

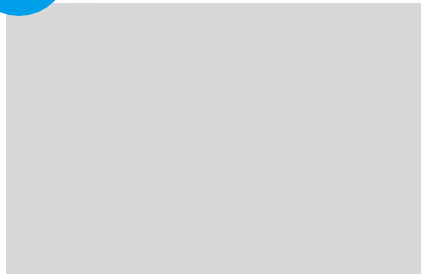


Select "Add eSIM"



Select "Use QR Code"

05

**Scan QR code**

Position the QR code from your carrier in the frame.

[Learn More...](#)[Enter Details Manually](#)

Scan the QR code displayed on the "Invoice" sent to your email after purchase.

06

**Activate eSIM**

Your new eSIM from Hutchison HK is ready to activate.

Note: Tapping "Continue" at this point will activate the Minpaku eSIM.

Continue

Tap "Continue"

07

**Cellular Setup Complete**

Your Hutchison HK eSIM is now active on this iPhone.

Done

If this display appears, the eSIM has been successfully loaded.

The next page contains optional settings.

We recommend changing the name, especially if you plan to activate multiple eSIMs.

08

Cellular Plan Labels

Choose labels for each of your cellular plans.

LABEL FOR 

Primary

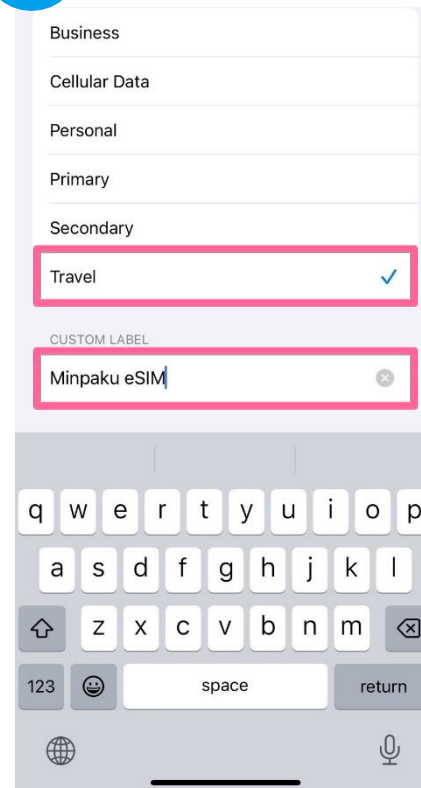
LABEL FOR YOUR 1010 / CSL PLAN

Cellular Data

Continue

Select "Cellular Data"

09



Business

Cellular Data

Personal

Primary

Secondary

Travel

CUSTOM LABEL

Minpaku eSIM

q w e r t y u i o p

a s d f g h j k l

z x c v b n m

space

return

Select "Travel" as the usage, and input "Minpaku eSIM" as the custom name.

1

Cellular Plan Labels

Choose labels for each of your cellular plans.

LABEL FOR 

Primary

LABEL FOR YOUR 1010 / CSL PLAN

Minpaku eSIM

Continue

After entering, tap "Continue"

1

Default Line

Your default line is used to call or send messages to people who are not in your contacts.

The people in your contacts can be assigned a preferred line at any time in the Contacts app.

Primary

Minpaku eSIM

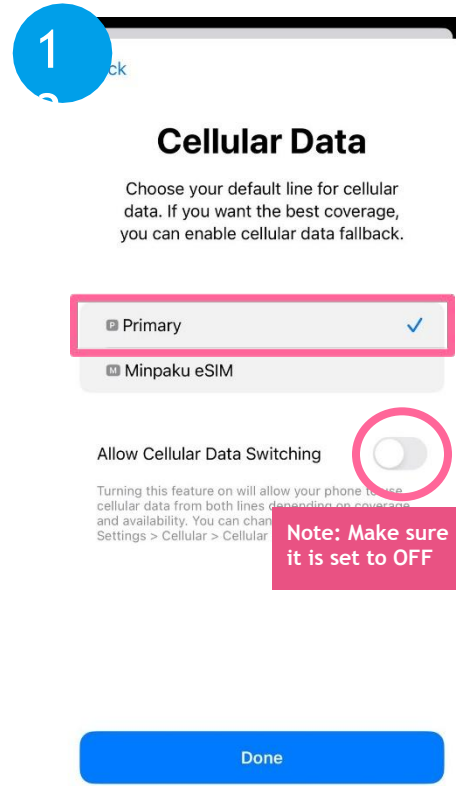
You can customize this later in Settings.

Continue

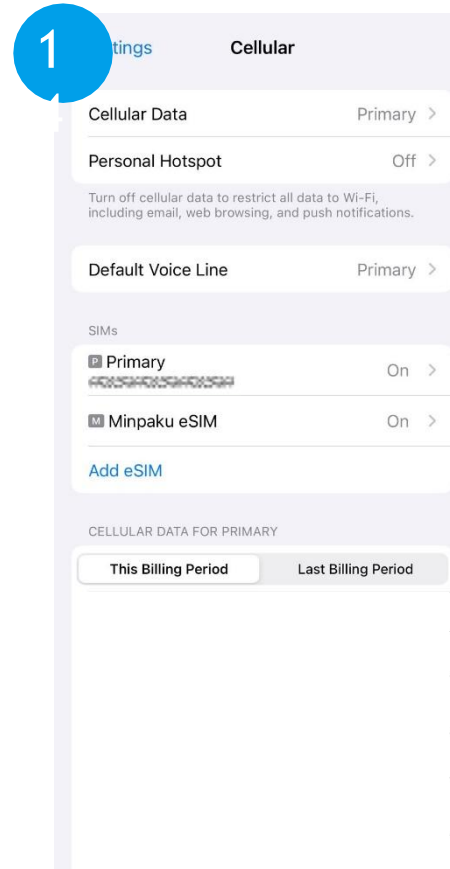
For the default line, select the "Primary Line" that you use regularly.
Then tap "Continue"



Here, also select "Primary Line" to avoid affecting your main network, then tap "Continue"



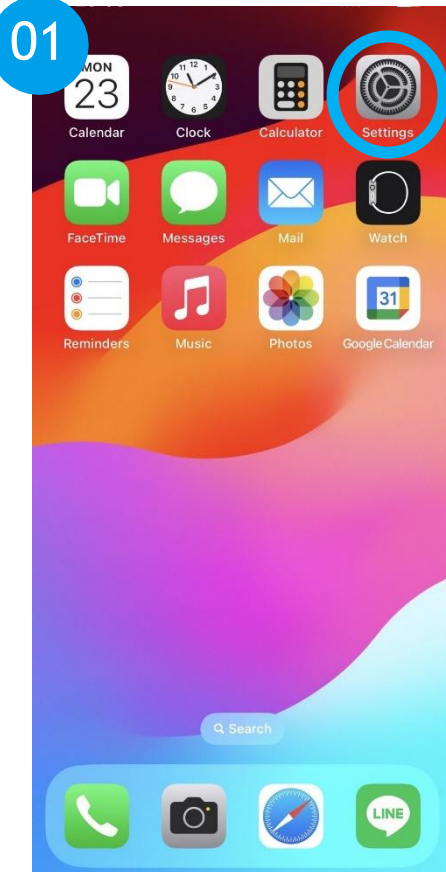
For the default line, select the "Primary Line" that you use regularly. Then tap "Continue"



You're all set. You can now toggle the Minpaku eSIM ON/OFF as needed.

※Please note, if you delete the configured eSIM information, re-issuance will be required.

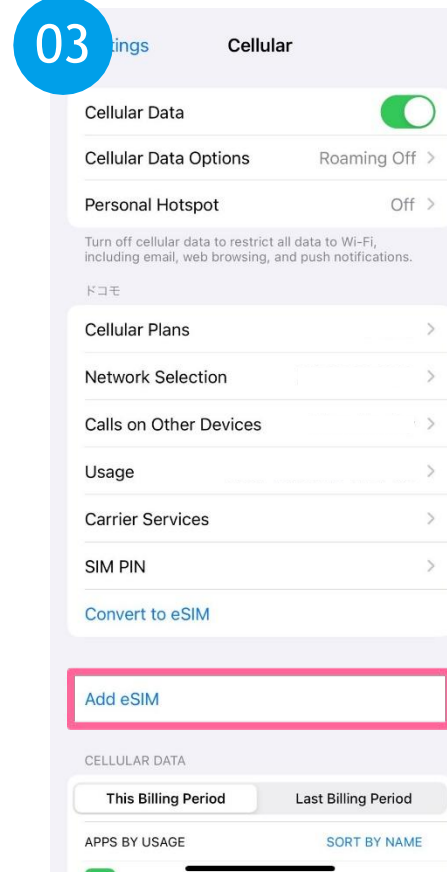
※The re-issuance of the eSIM is available between 12:00 PM and 8:00 PM JST.



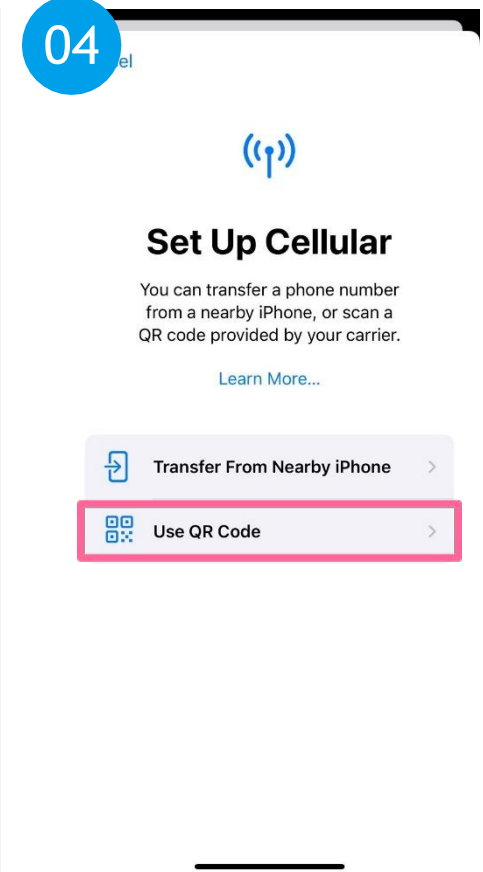
Tap "Settings"



Select "Cellular"

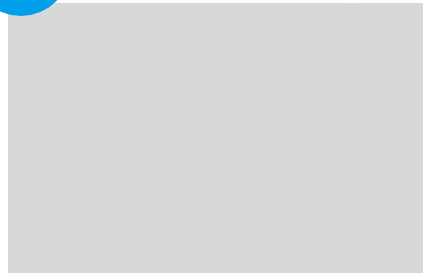


Select "Add eSIM"



Select "Use QR Code"

05

**Scan QR code**

Position the QR code from your carrier in the frame.

[Learn More...](#)

[Enter Details Manually](#)

Select "Enter Details Manually"

06

Enter Activation Code

Enter the activation information provided by your carrier.

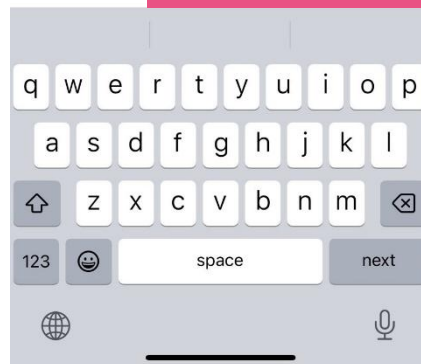
SM-DP+ Address

Activation Code

Confirmation Code Optional

A confirmation code is required if it has been provided by your carrier.

※You do not need to input a confirmation code.



Copy and paste the code found in the body of the "Invoice" email you received after purchase.

07

Enter Activation Code

Enter the activation information provided by your carrier.

SM-DP+ Address

Activation Code

Confirmation Code Optional

A confirmation code is required if it has been provided by your carrier.



After entering the SM-DP+ address and activation code, select "Next" in the top right corner.

08

**Activate eSIM**

Your new eSIM from Hutchison HK is ready to activate.

Note: Tapping "Continue" will activate the Minpaku eSIM.

Continue

Tap "Continue"

How to set up eSIM 〈Manual Input〉

09



Cellular Setup Complete

Your Hutchison HK eSIM is
now active on this iPhone.

Done

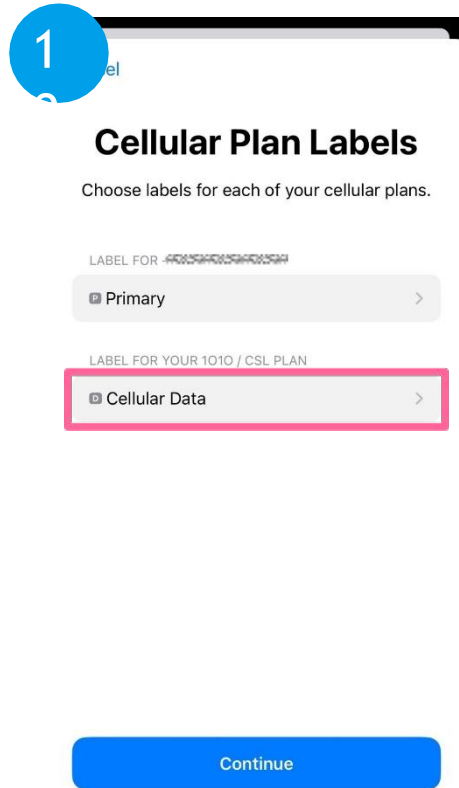
If this display appears, the
eSIM has been
successfully loaded.

The next page contains
optional settings.

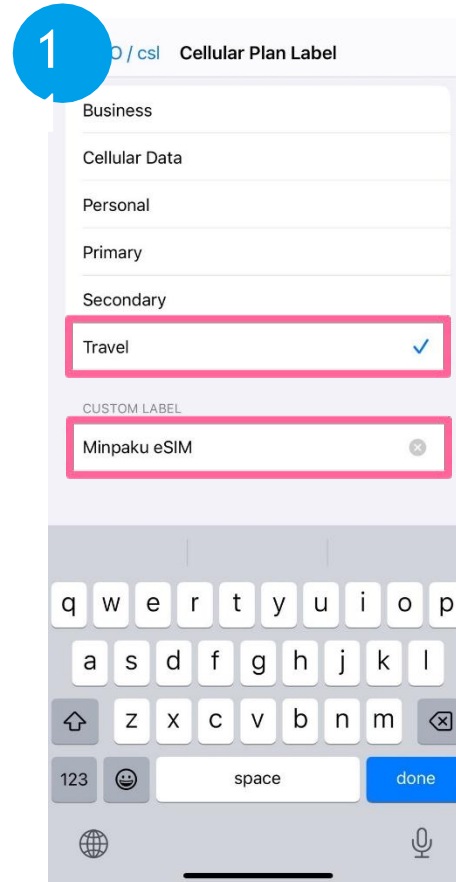


We recommend changing
the name, especially if you
plan to activate multiple
eSIMs.

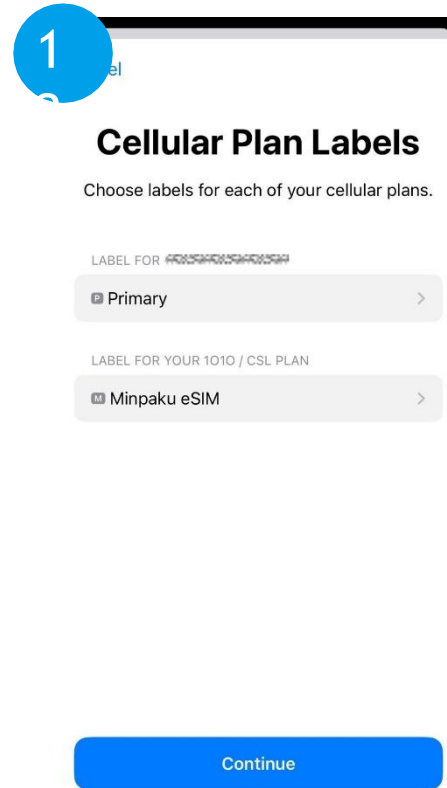
※Please note that the display may differ depending on the iOS version.



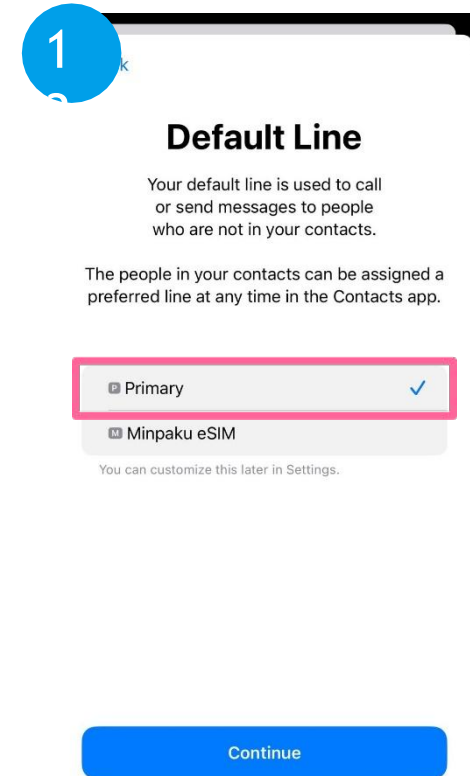
Select "Cellular Data"



Select "Travel" as the usage, and input "Minpaku eSIM" as the custom name.



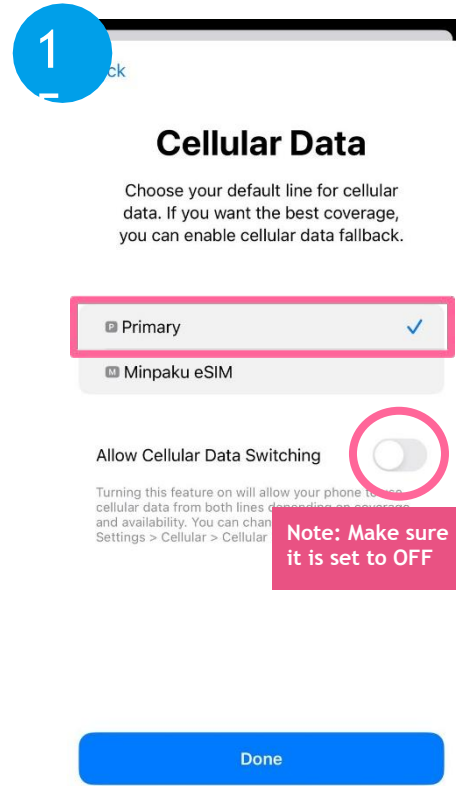
After entering, tap "Continue"



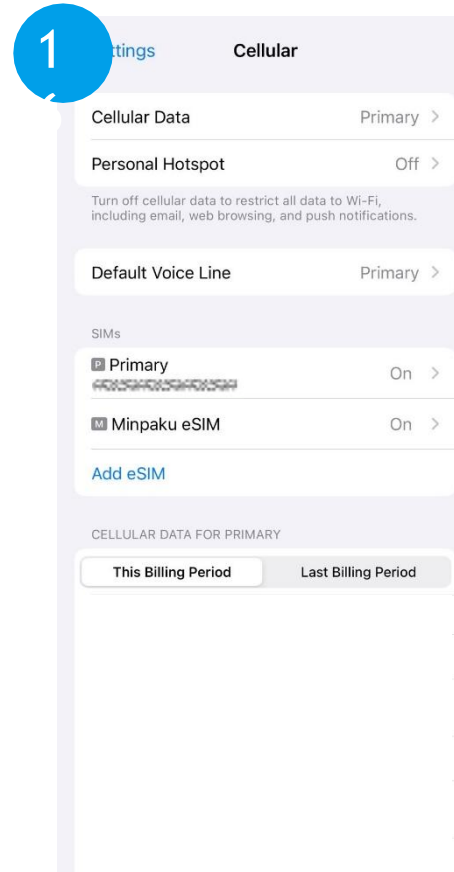
For the default line, select the "Primary Line" that you use regularly. Then tap "Continue "



Here, also select "Primary Line" to avoid affecting your main network, then tap "Continue".



For the default line, select the "Primary Line" that you use regularly. Then tap "Done".



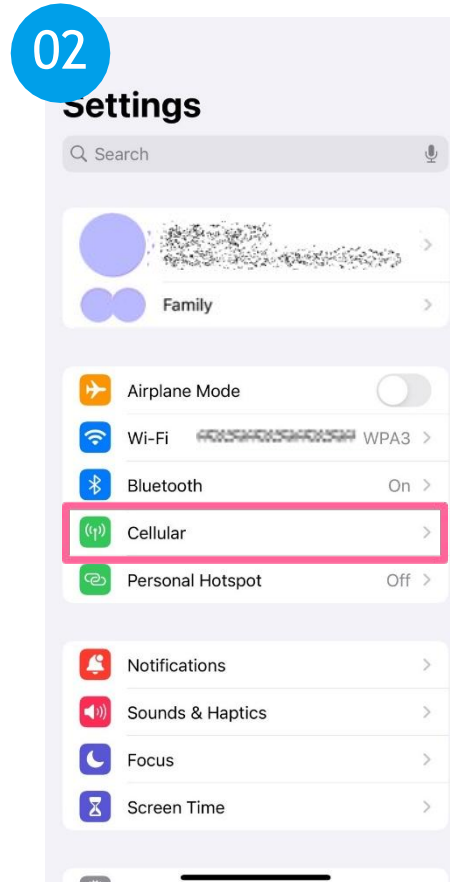
You're all set. You can now toggle the Minpaku eSIM ON/OFF as needed.

※Please note, if you delete the configured eSIM information, re-issuance will be required.

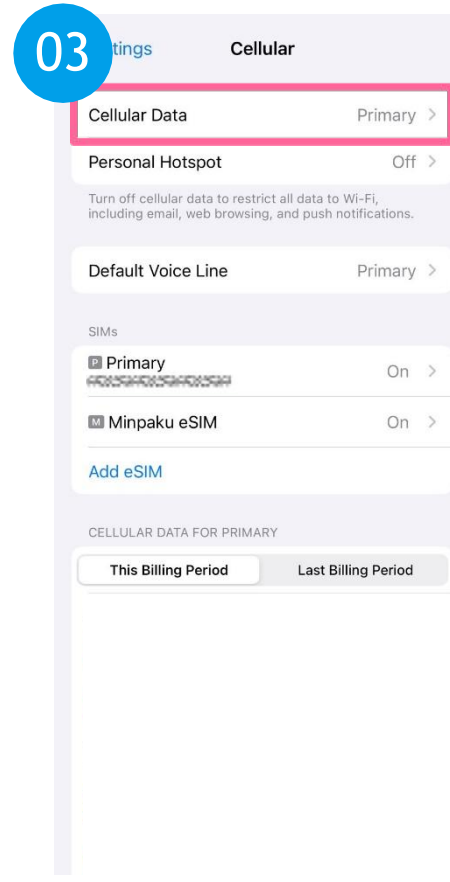
※The re-issuance of the eSIM is available between 12:00 PM and 8:00 PM JST.



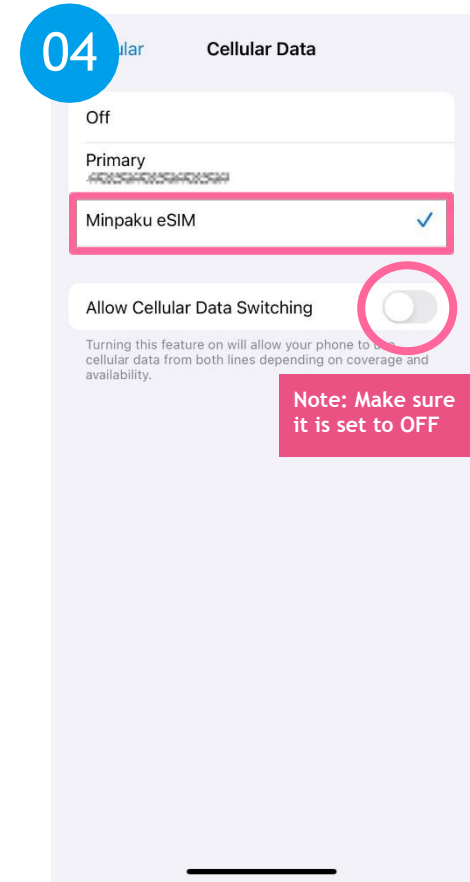
Tap "Settings"



When you want to use it while traveling, open Settings and select "Cellular"

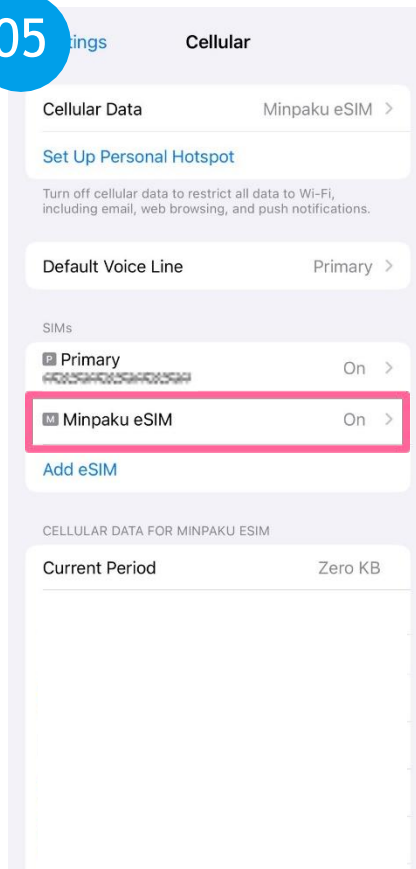


Select "Cellular Data"



For the active line, select the secondary line. Here, choose "Minpaku eSIM" as set previously. Then, tap "Back" to return to the previous screen.

05



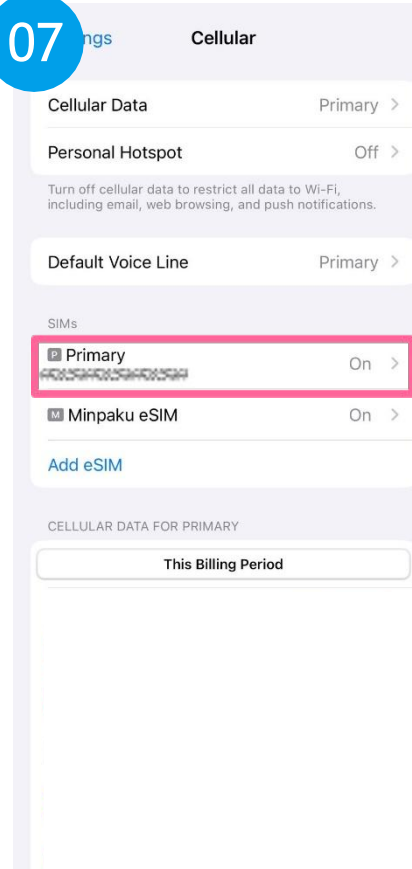
Select the secondary line
"Minpaku eSIM"

06



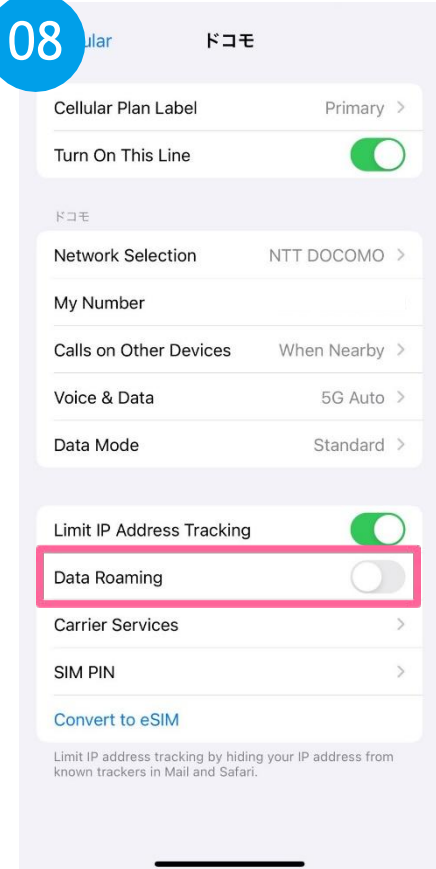
If data roaming is OFF,
please turn it ON.

07



Use "Back" to return to
the previous screen and
select "Primary Line".

08



We recommend setting
"Roaming" to OFF to
avoid using the primary
line for communication.

※Please note, if you delete the configured eSIM information, re-issuance will be required.

※The re-issuance of the eSIM is available between 12:00 PM and 8:00 PM JST.

※Please note that the display may differ depending on the iOS version.

